



# Computing

## Online Safety

# Keep It to Yourself





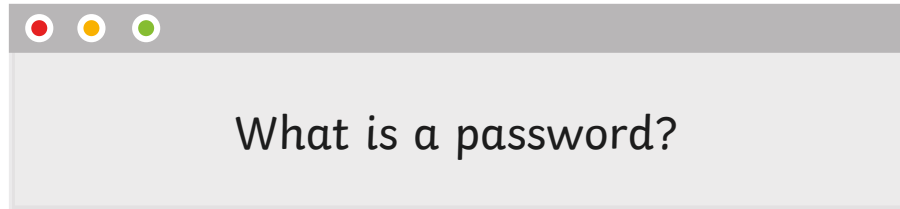
# Aim

- To create strong passwords and understand privacy settings.

# Success Criteria

- I can create a strong password.
- I can explain why a strong password is important.
- I can explain what privacy settings are.

# What Is a Password?



Something to keep your things safe

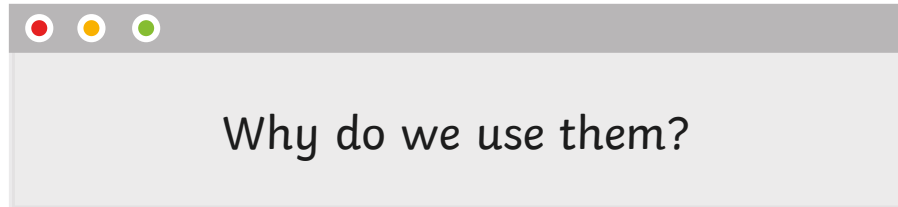


**A lock**

**A secret**

**A code**

# What Is a Password?



To stop people seeing our information.

To stop people using our accounts.

To make sure only you can change your information.

**Remember:** adults will probably have more password-protected accounts than children and these could be for very important things.



# Keep Out!



Look at the cards you have been given.

Discuss how you would feel if someone had your password for the site on your cards.

## What could happen if someone had the password to that account?

- What information could they find out?
- What could they use your account for?
- Could it harm you?



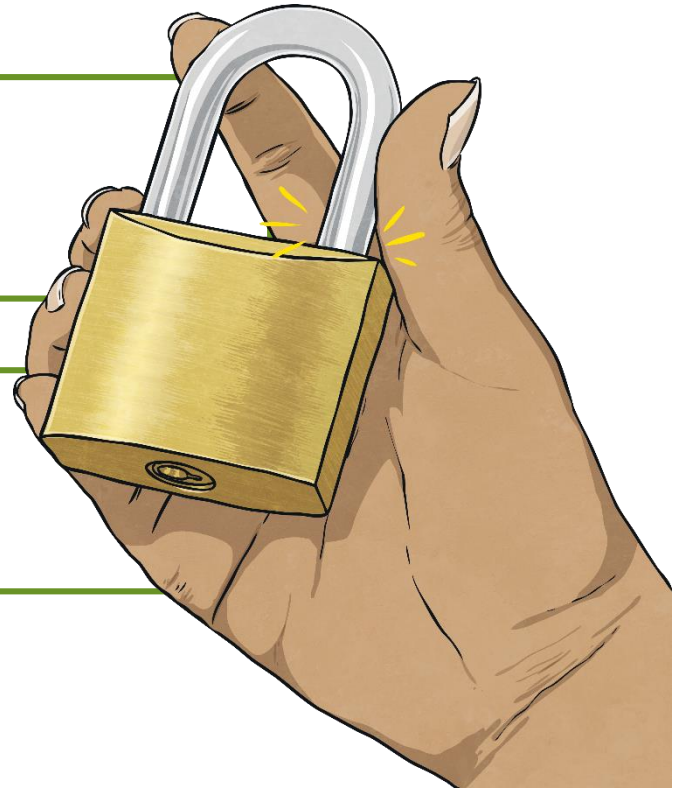
# Protect Yourself



Passwords stop people from getting into your account, but they also stop people from seeing any private information that might be in your account.

When you make an account, you might have your name, address, phone number, email or even bank details stored there.

If someone has your password, they might be able to see all of that information!





# Protect Yourself



Another easy way to protect your information is to always choose to use strong privacy settings.

Privacy settings mean that you can control what people can see on your account.

It's the difference between a stranger seeing this:



Or this:



**Which one would you prefer a stranger seeing?**



# Tough Security



On whiteboards, rank these passwords from 1-5 (most to least secure).

- a) (a pet's name) **Fluffy123**
- b) **Password123**
- c) **Abcde12345**
- d) (random word and number) **pencil21**
- e) **A1btD!bq**

Remember -  
never share  
your password!



**Can you explain your choices?**

Password b is the least secure... But it's actually one of the most common passwords in the world!  
The most secure is password e. It uses capital letters, lowercase letters, numbers, symbols and no real words.

# Tough Security

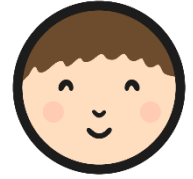


Which of these four privacy settings would you advise someone to use on a children's social media site?

1. Your whole profile can be seen by friends.
2. You can choose which parts of your profile can be seen by both strangers and friends.
3. Anyone can see your whole profile, just be careful what you put on there (open profile).
4. No part of your profile can be seen by anyone.

Option 4 is definitely the most secure, but the second option could also be safe. If you are unsure, it is best to stick to the fourth option or ask an adult you trust to help.

# Cyber Security Guards



What makes a secure password?

What could happen if you do not have a secure password?

Complete the **Cyber Security Guards Activity Sheet** to show how much you know about the importance of passwords and privacy settings.

★

Cyber Security Guards

Circle the best password to use and put a cross next to the least secure.  
Carrots41   1234567   p1xie45  
Y?ygbSr00D   qwerty   AnGelA15!

Write three examples of strong passwords below.

Name the two simplest ways to keep the information in your accounts secure.  
1.  
2.

If someone could see your private information because you had no security settings, what could happen?  
  
If someone had your password, what could they use it to do?

visit twinkl.com

Computing | Year 3 | Online Safety | Keep It to Yourself | Lesson 3

twinkl.com



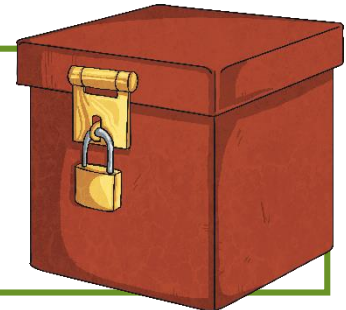
# Top Tips

- » Why should you pick a hard-to-guess password?
- » Who should you share your passwords with?
- » Why should you use privacy settings?

Is it safe?



Passwords and privacy settings are both really, really good ways of keeping your information private and keeping you safe online.



# Aim



- To create strong passwords and understand privacy settings.

# Success Criteria

- I can create a strong password.
- I can explain why a strong password is important.
- I can explain what privacy settings are.



The background of the page features a series of diagonal stripes in alternating shades of light blue and white. Overlaid on these stripes are numerous blue splatters and blotches of varying sizes, creating a dynamic, textured effect. The overall color palette is monochromatic, using different tones of blue.

twinkl